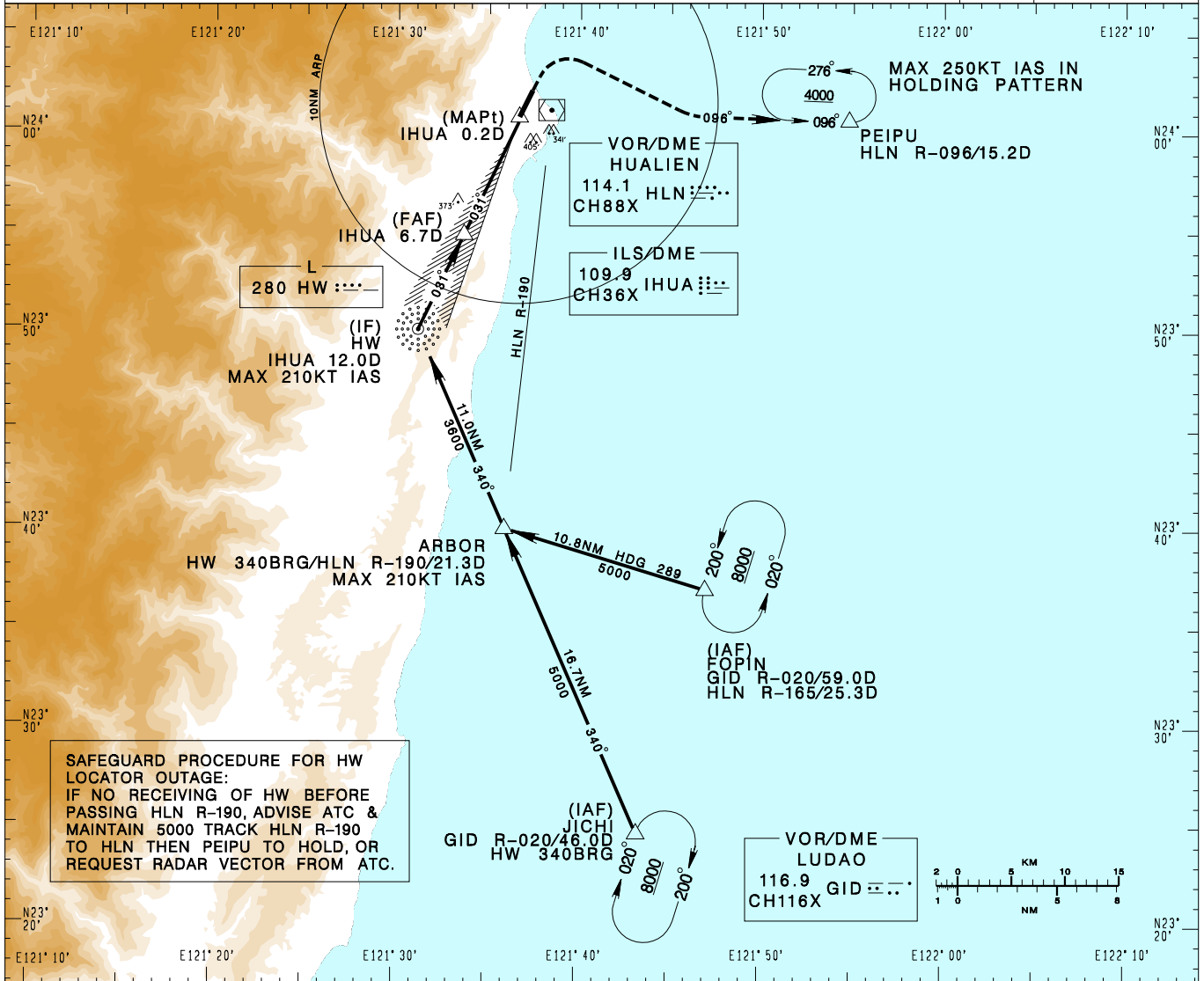


花蓮機場
HUALIEN AD

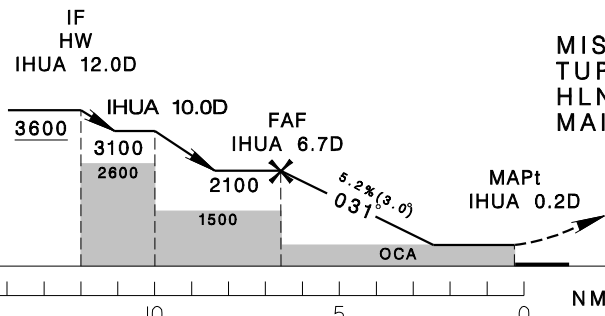
RCYU
LOC RWY03

| | | | | | | | | |
|--|--|---------------------|--|-----------------------------------|--|--------------------|--|--------------|
| TAIPEI APP 124.0 119.1 330.2 276.8 | | | | HUALIEN TWR 118.1 126.18 236.6 | | | | VAR 4° W |
| Apt Elev: 51' | | Rwy03 THR Elev: 44' | | Trans Level: FL130 | | Trans Alt: 11,000' | | |
| BEARINGS ARE MAGNETIC; DISTANCES ARE NAUTICAL MILES; ELEVATIONS, HEIGHTS IN FEET | | | | | | | | |



SAFEGUARD PROCEDURE FOR HW LOCATOR OUTAGE:
 IF NO RECEIVING OF HW BEFORE PASSING HLN R-190, ADVISE ATC & MAINTAIN 5000 TRACK HLN R-190 TO HLN THEN PEIPU TO HOLD, OR REQUEST RADAR VECTOR FROM ATC.

| | | | | | |
|------|------|------|------|------|--------------|
| 6DME | 5DME | 4DME | 3DME | 2DME | DIST to IHUA |
| 1960 | 1640 | 1320 | 1000 | 690 | ADVISORY ALT |



MISSED APCH:
 TURN RIGHT TO TRACK HLN R-096 TO PEIPU, MAINTAIN 4000 AND HOLD.

| CATEGORY | MINIMA (OCA IN FT, VIS IN M, OCH IN FT) | | | |
|-----------------------|---|-------------------------|--------------|--------------|
| | A | B | C | D |
| STRAIGHT IN | 630/1200 586 RVR1200 | 630/1200 586 RVR1200 | 630/2500 586 | 630/2500 586 |
| STRAIGHT IN (ALS OUT) | 630/1600 586 | 630/1600 586 | 630/2700 586 | 630/2700 586 |

NOTE
 1. CIRCLING NOT AUTHORIZED.
 2. CAUTION HIGH TERRAIN AROUND THE AIRPORT AND ALONG THE APPROACH COURSE.
 3. A 341FT MSL STACK AT 1.52NM EAST OF THR03.
 4. A 405FT MSL TREE AT 1.18NM SE OF THR03.
 5. NO TURN BEFORE MAPt.
 *DME REQUIRED.

CHANGES: NEW PAGE NUMBER